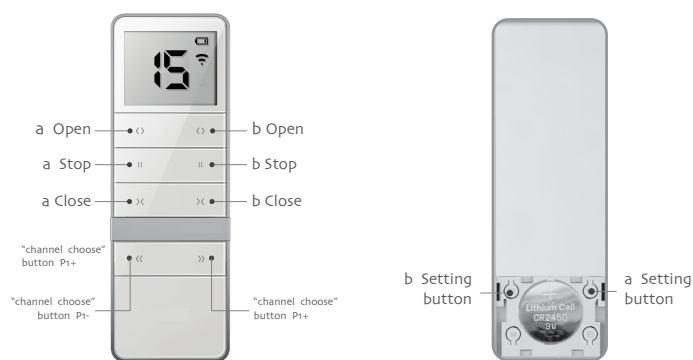


DC1862

Emitter Specification

Version NO. : B/00

T Type specification



DC1862

15-channel double-control LCD emitter

DC1862 Back side

T Technical support

Technical specification	Function instruction
<ul style="list-style-type: none"> Input voltage: 3V(CR2450) Transmitting frequency: 433MHz Transmitting power: 10 milliwatt Operating temperature: -10℃—50℃ Transmission distance: 200 meters open office, 35 meters on two walls 	<p>Transmitter: 15-channel 15-channel LCD control emitter(DC1862), 15-channel double-control LCD emitter(DC1862). One number of LCD screen means one control channel. Press "channel choose" button P1- (number descending) or P1+ (number increasing) to change the channel. When the channel number is displayed in the LED, then the channel is selected as the current channel. If the number is "0", it enters the group control channel, all the channels are selected. Under the group control mode, you can't program the motor or add emitters. DC1862 15-channel double-control emitter: a way and b way can be chosen, each way can control one set curtain motor separately. A way and b way don't interfere each other. The operation of the B track and A track are the same.</p> <p>Notice: transmitter do not exposed to moisture and strike, so as not to affect life. When you use transmitter, if found emission distance obviously short or less sensitive, please change another same new battery. Please have batteries for recycling.</p>

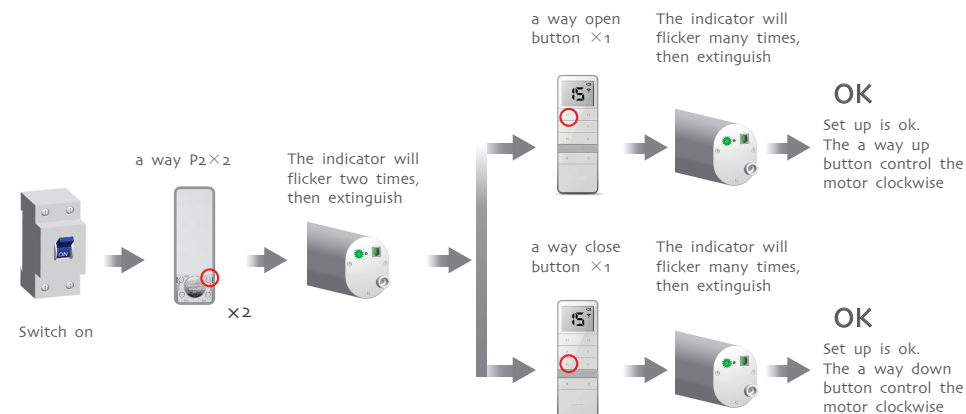
A Additional function

Matchable DT52E Curtain Motor set up

During the settings, the time between two operation must be shorter than 4s, otherwise it will quit the setting



- The open button is suppose to open the curtain, if not, you can reprogram the motor with the close button to reverse the direction.
- The setting of the b track should keep the same as the a track.



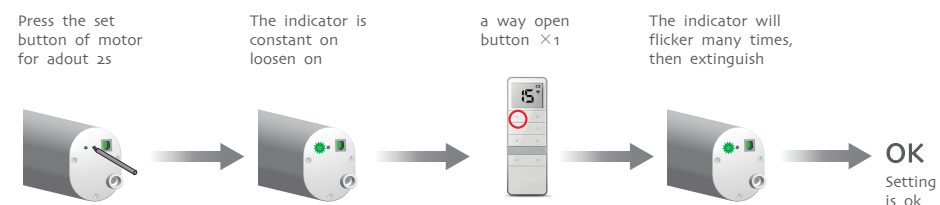
A Additional function

DT52E Curtain Motor add emitter

During the settings, the time between two operation must be shorter than 4s, otherwise it will quit the setting



- One receiver store 20 emitters channels at most
- The setting of the b track should keep the same as the a track.



A Additional function

The valid channels selection



In the setting state, press the up or down button you can quit quickly, if you want to change the valid channels, reset it.

